



viking 35
CONVERTIBLE





After viewing her sleek, traditional Viking lines at dockside, you sense that this 35' Convertible is something special. Upon entering the salon from the spacious cockpit, you know without question, it's the finest boat of its size ever built. The feeling of elegance and luxury immediately overwhelm you . . . from the lush carpeting underfoot to the designer window treatments alongside. And to starboard is a color coordinated L-shaped sofa with a built-in entertainment center opposite.

Forward and down one step to starboard, you'll find the all-electric galley equipped with an upright refrigerator/freezer, two-burner stove and stainless steel sink. Facing the galley is a large convertible dinette, comfortable enough to seat four adults for a gourmet dinner. Just ahead of the galley is the head with a full-sized stall shower, vanity/sink combination and electric toilet with holding tank.

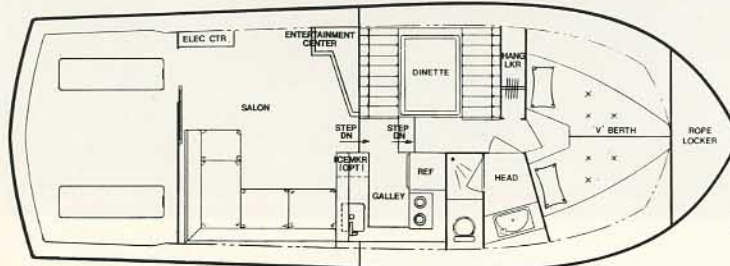
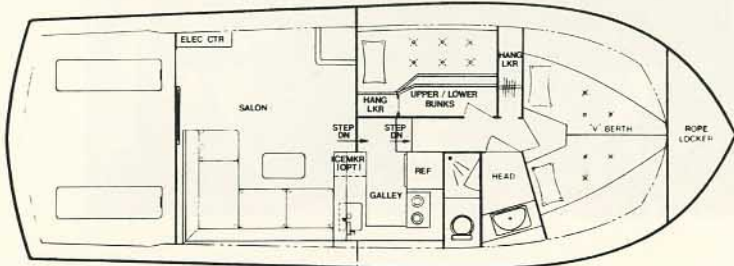
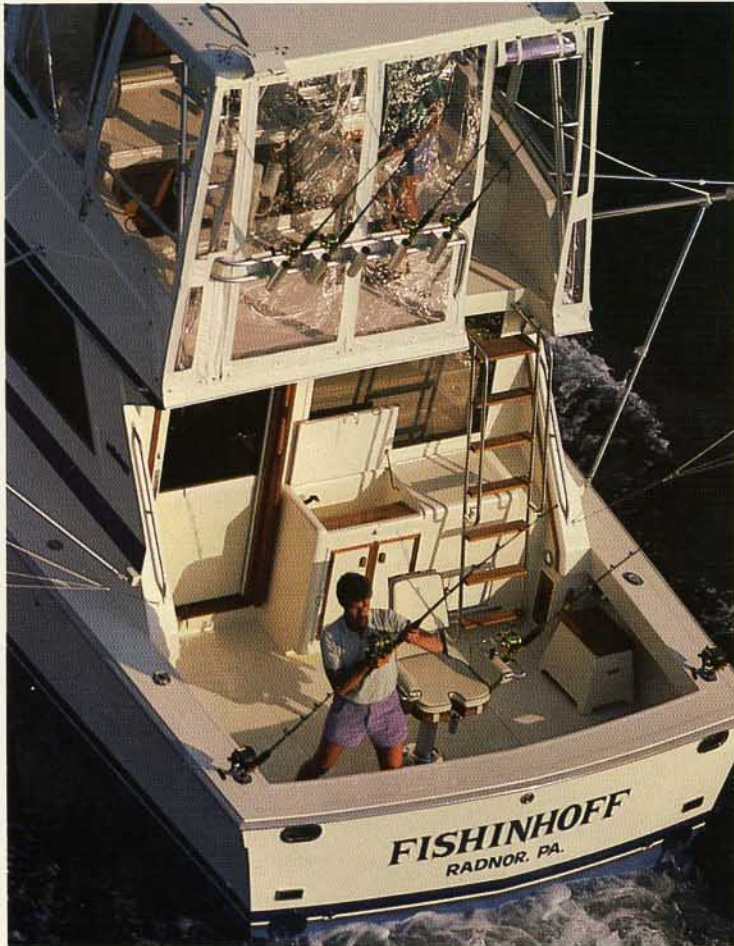
Open the teak door all the way forward, and you enter the master stateroom complete with oversized V-bunks, carpeting, storage drawers and a hanging locker for your onshore attire.

While under way, you'll want to spend time on the oversized flying bridge. Seating includes both a helm and companion chair as well as a forward and side bench for six more crew members.

The all new 35' Viking . . . unquestionably the finest convertible of its size ever built!



viking 35 CONVERTIBLE



Route 9 & The Garden State Parkway
 New Gretna, N.J. 08224
 609-296-6000